

Outlet Conveyor—Gravity Roller Straight

The non powered conveyor is an entry level product that when coupled to a rack type dishwasher makes the collection of clean dishes in baskets easier and quicker.

The product is the culmination of years of experience in manufacturing and supplying dish handling and washing systems to Australian hospitals and other large Institutional customers.

The system is the cleanest and to easiest to operate, requiring no maintenance.

It is available in a range of lengths to suit the number of baskets being washed.

Models:

SPDH.OC.GR.S.L.W.Z

Where:

SPDH = Standard Product Dish Handling

OC = Dishwashing Outlet Conveyor

GR = Gravity Roller

S = Straight

L = Length (mm)

Std lengths 1100mm

1700mm

2100mm

2700mm

3300mm

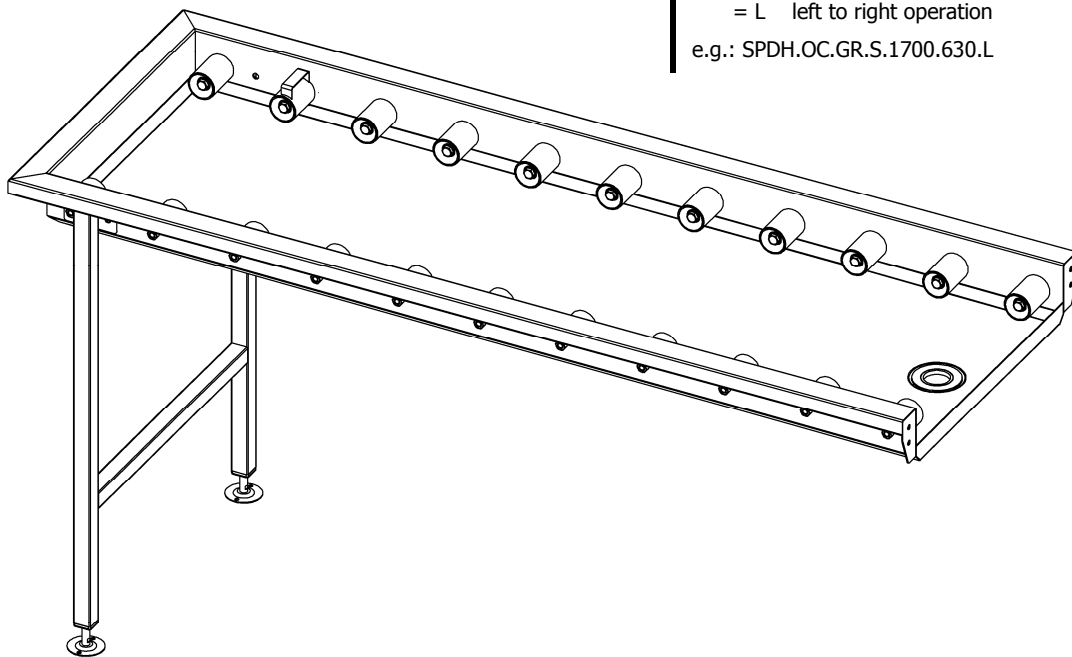
4200mm

W = Width (Std 630mm)

Z = R right to left operation

= L left to right operation

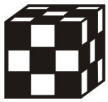
e.g.: SPDH.OC.GR.S.1700.630.L



Features and Benefits:

- Stainless Steel 304 No 4 1.5mm construction throughout complete unit.
- A 45 degree internal corner to stainless steel trough to ensure bacteria does not grow in sharp corners. Easy to clean.
- Black poly non powered rollers.
- 32x32 stainless steel legs and frame with adjustable feet.
- Limit switch fitted to end of conveyor to stop dishwasher when fully loaded.

Due to continuous product research and development, the information contained herein is subject to change without notification.



Outlet Conveyor—Gravity Roller Straight

Models:

SPDH.OC.GR.S.L.W.Z

Where:

SPDH = Standard Product Dish Handling

OC = Dishwashing Outlet Conveyor

GR = Gravity Roller

S = Straight

L = Length (mm)

Std lengths 1100mm

1700mm

2100mm

2700mm

3300mm

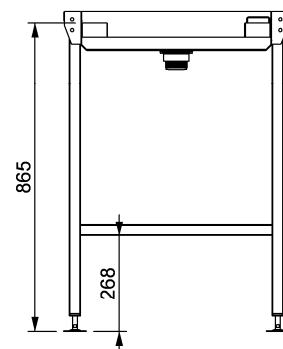
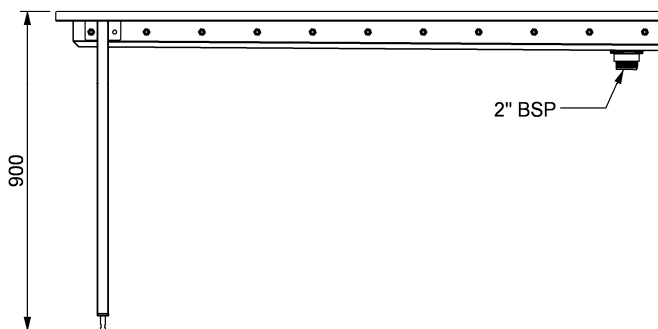
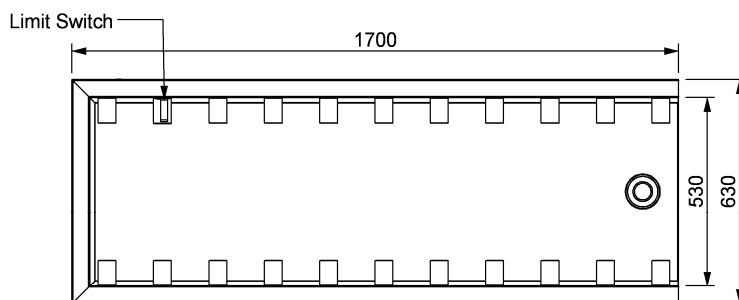
4200mm

W = Width (Std 630mm)

Z = R right to left operation

= L left to right operation

e.g.: SPDH.OC.GR.S.1700.630.L



Due to continuous product research and development, the information contained herein is subject to change without notification.